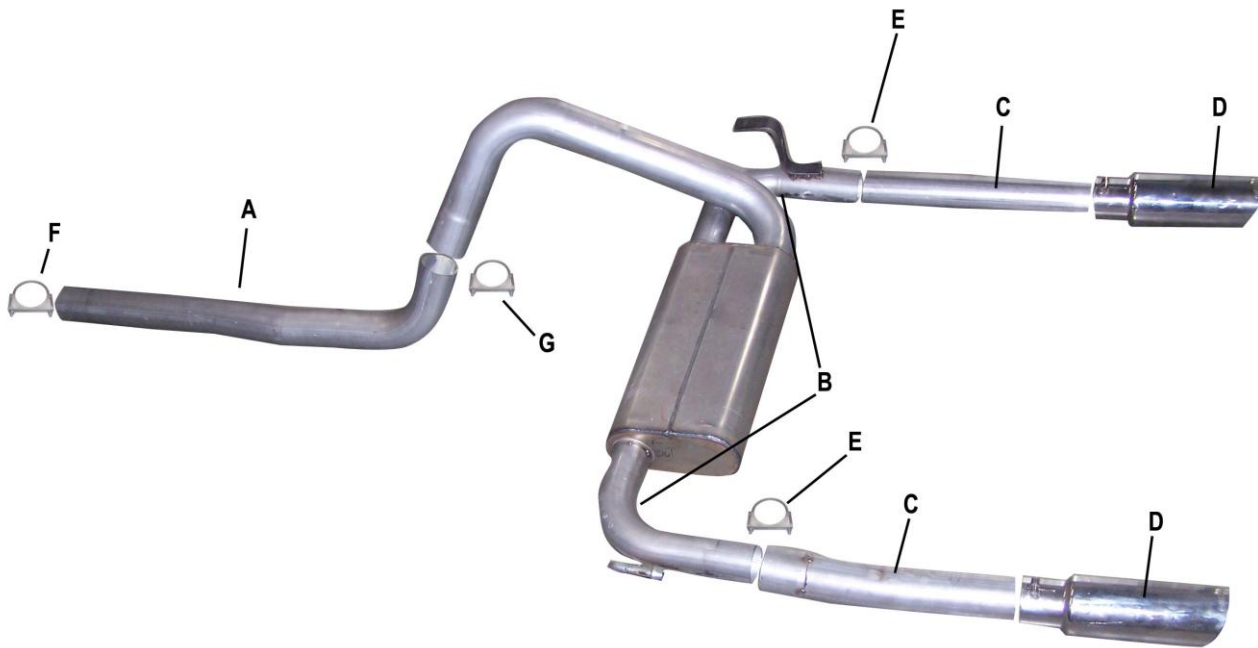




INSTALLATION INSTRUCTIONS
STAINLESS DUAL REAR EXHAUST
CHEVY, CAMARO/FIREBIRD, 5.7L, LS-1 V8
PART #620000



ITEM	PART #	QUANTITY	DESCRIPTION
A	1124-700871S	1	3" STAINLESS HEADPIPE
B	700872S	1	STAINLESS MUFFLER ASSEMBLY
C	1125-700873S	2	2 1/2" STAINLESS EXIT PIPE
D	500419	2	4" INTERCOOLED SLASH TIP (clamp on)
E	5757	2	2 1/2" CLAMP
F	5758	1	2 3/4" CLAMP
G	OHD300	1	3" CLAMP

Thank you for purchasing our Gibson exhaust system for your vehicle. If you need further assistance, please do not hesitate to call our technical dept at (800) 528-3044 Monday through Friday, 8:00 am to 5:00 pm.

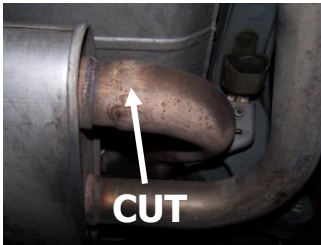
INSTALLATION INSTRUCTIONS #620000

CAREFULLY READ INSTRUCTIONS BEFORE STARTING INSTALLATION

When installing this exhaust system make sure to use proper safety precautions. Use jack stands when working under the vehicle, set parking brake, block tires and use safety glasses and gloves. Allow exhaust to cool before attempting installation. Severe injury or burns could occur if safety measures are not taken.

SUGGESTED TOOLS: 1/2", 9/16" 15mm wrenches & sockets, WD-40, hacksaw, jack stands.

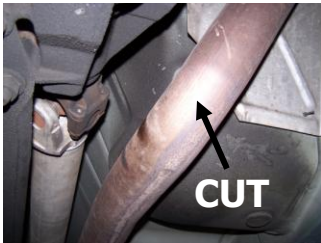
1. Disconnect the negative battery cable before removal of OEM exhaust. This will allow the computer to reset and recognize the new exhaust. Lay out the exhaust on the floor so it looks like the drawing and compare parts with manual.



2. To remove the stock exhaust, cut off your stock over axle tailpipe just at the muffler. Then remove hangers from rubber grommets and remove muffler assembly.



6. Install muffler assembly #B onto head pipe. Insert hangers into rubber grommets. Use a jack stand to support the muffler. Use clamp #G to secure the muffler to the head pipe. Do not tighten.



3. Then cut over axle tail pipe before axle and remove.



4. Then unbolt head pipe at clamp and remove.



5. Install head pipe #A onto your existing stock front pipe and attach with clamp #F. Use a jack stand to support the converter. Do not tighten.



7. Next, install the exit pipes #C. Use clamp #E to secure tail pipes.



8. Install stainless steel tips. Clamp down. When you have everything in place, firmly tighten all bolts and clamps down securely. Use stainless steel cleaner and a Scotch Brite pad weekly to prevent tip from discoloration. Inspect all fasteners after 25-50 miles of operation and re-tighten as necessary.

GIBSON EXHAUST systems are designed on a factory stock vehicle. Any aftermarket products installed could increase the sound levels of this Exhaust.

Make sure there is a 1" clearance from ALL rubber brake lines, shock boots, fuel lines, tires, etc to prevent heat related damage or fire.